

Updating EPAS ECU Firmware Using EPAS Desktop or EPAS Desktop Pro

Introduction

This Technical Note describes how the firmware of an EPAS ECU is updated using PolyLogic's EPAS Desktop or EPAS Desktop Pro application.

IMPORTANT: Do not attempt to upload new firmware to the EPAS ECU without first contacting DC Electronics and obtaining the correct file for your system and application.

Procedure

Do the following to update the firmware:

1. Connect the PC to the EPAS ECU via the serial lead.
2. Start EPAS Desktop or EPAS Desktop Pro.
3. Ensure that the EPAS ECU is not powered.
4. Select **Setup** ➔ **Firmware** from the main menu, the File Open dialog will be displayed.
5. Locate the required .hex file and click **Open**, the Upload Hex File dialog (Figure 1) will be displayed.

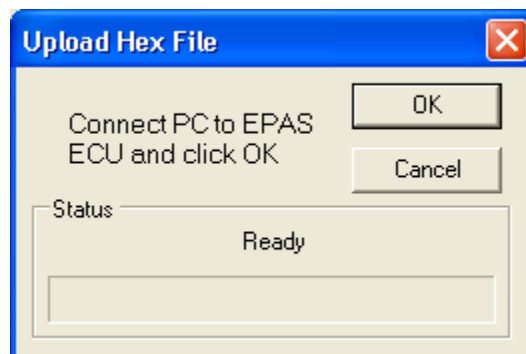


Figure 1 - Upload Hex File Dialog (Ready)

6. Check the connection between the PC and the EPAS ECU and click **OK** or **Cancel** to abandon the firmware update process.
7. The Upload Hex File dialog shows that EPAS Desktop is attempting to communicate with the EPAS ECU (Figure 2).

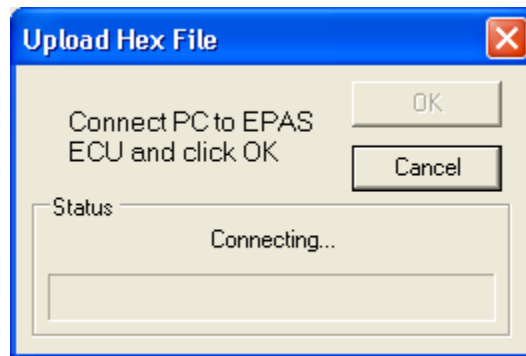


Figure 2 - Upload Hex File Dialog (Connecting)

8. Switch on the EPAS ECU, the Upload Hex File dialog shows that the selected hex file is being uploaded to the EPAS ECU (Figure 3).

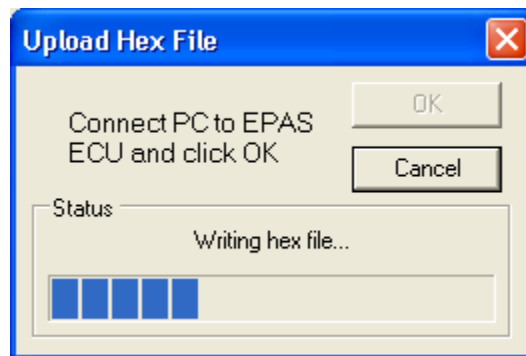


Figure 3 - Upload Hex File Dialog (Writing)

9. Once the entire hex file has been written the EPAS ECU will reset and run with the new firmware.